

BridgeWare

All about Data Connectivity Solutions

LSE OPC for InTouch

브리치웨어

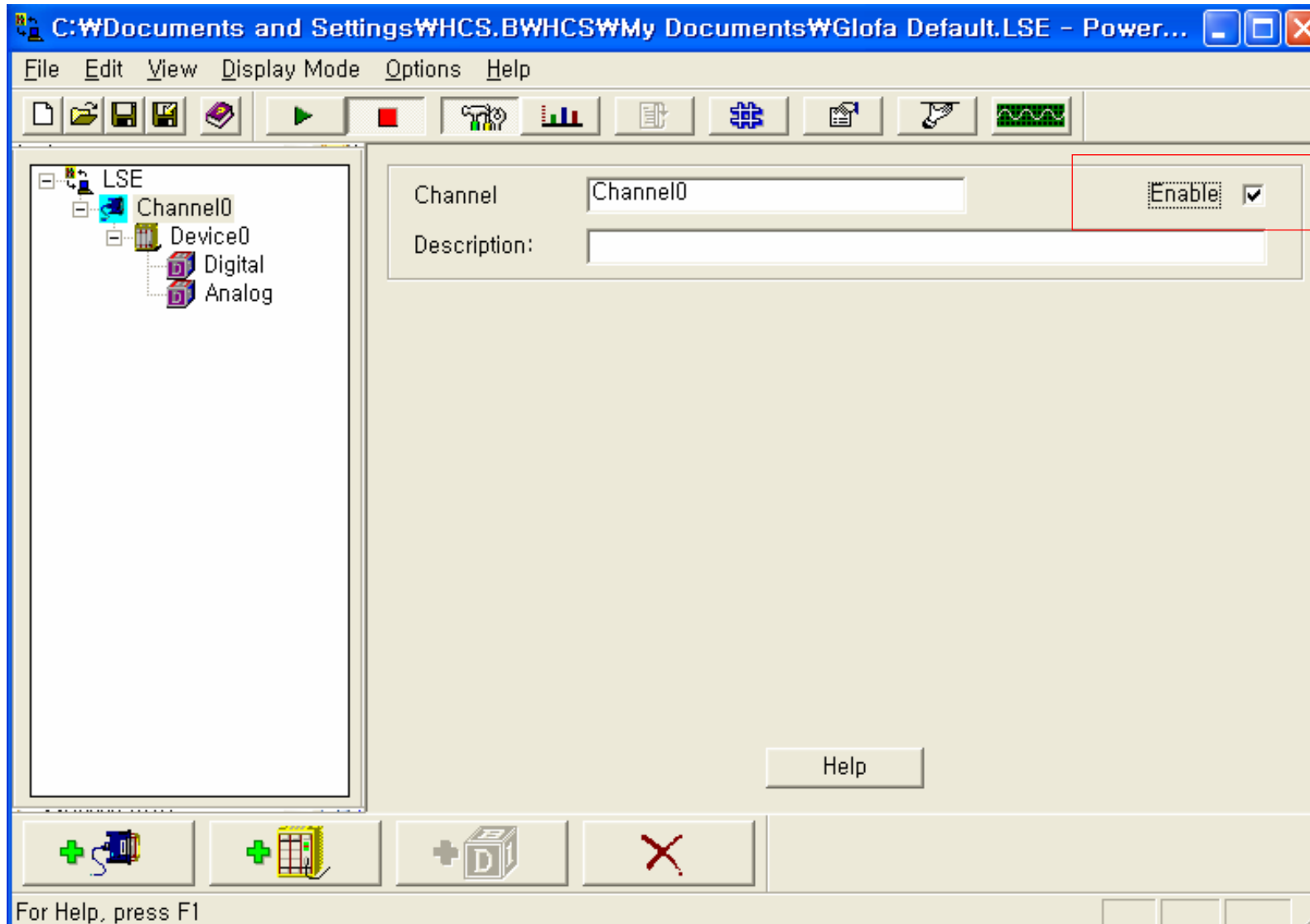
0505-303-1963

info@opchub.com

www.opchub.com



Step 1. Channel Setup



LSE 설정하기 – Device Setup

C:\Program Files\LSE\default.LSE - PowerTool

File Edit View Display Mode Options Help

LSE
Channel0
Device0
Analog
Digital

Device Name: Device0 Enable

Description:

PLC Type: GLOFA/GMR Ethernet Help

Primary Mode
 Tcp Udp

Backup Mode
 Tcp Udp

Primary Device
Primary IP Address: 192.168.10.100 ...

Backup Device
Backup IP Address: ...

Primary Port No. : For DDNS Service: default

Backup Port No. : default

Reply Timeout: 01

Retries: 3

Delay: 10

Reply: 01

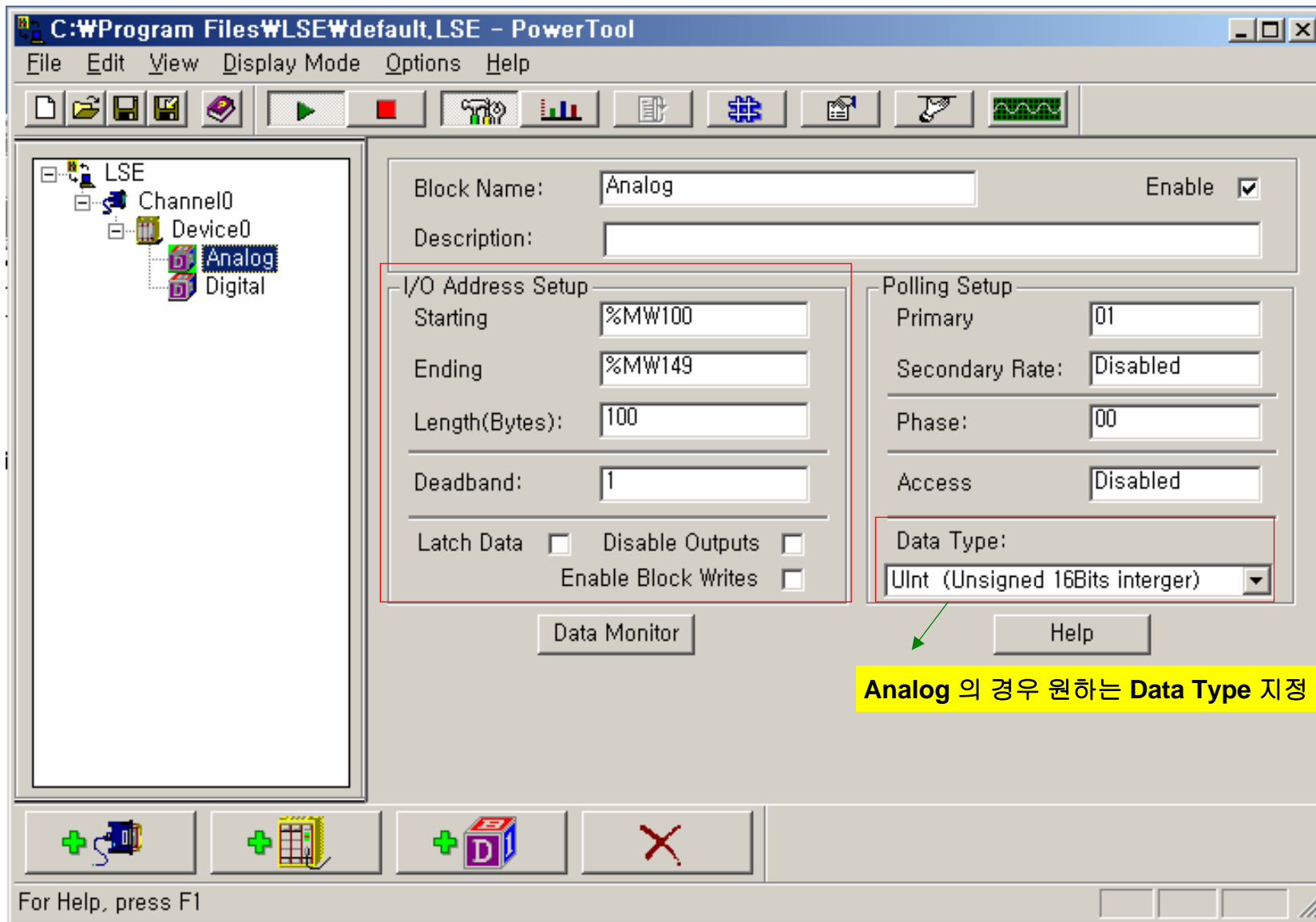
Retries: 3

Delay: 10

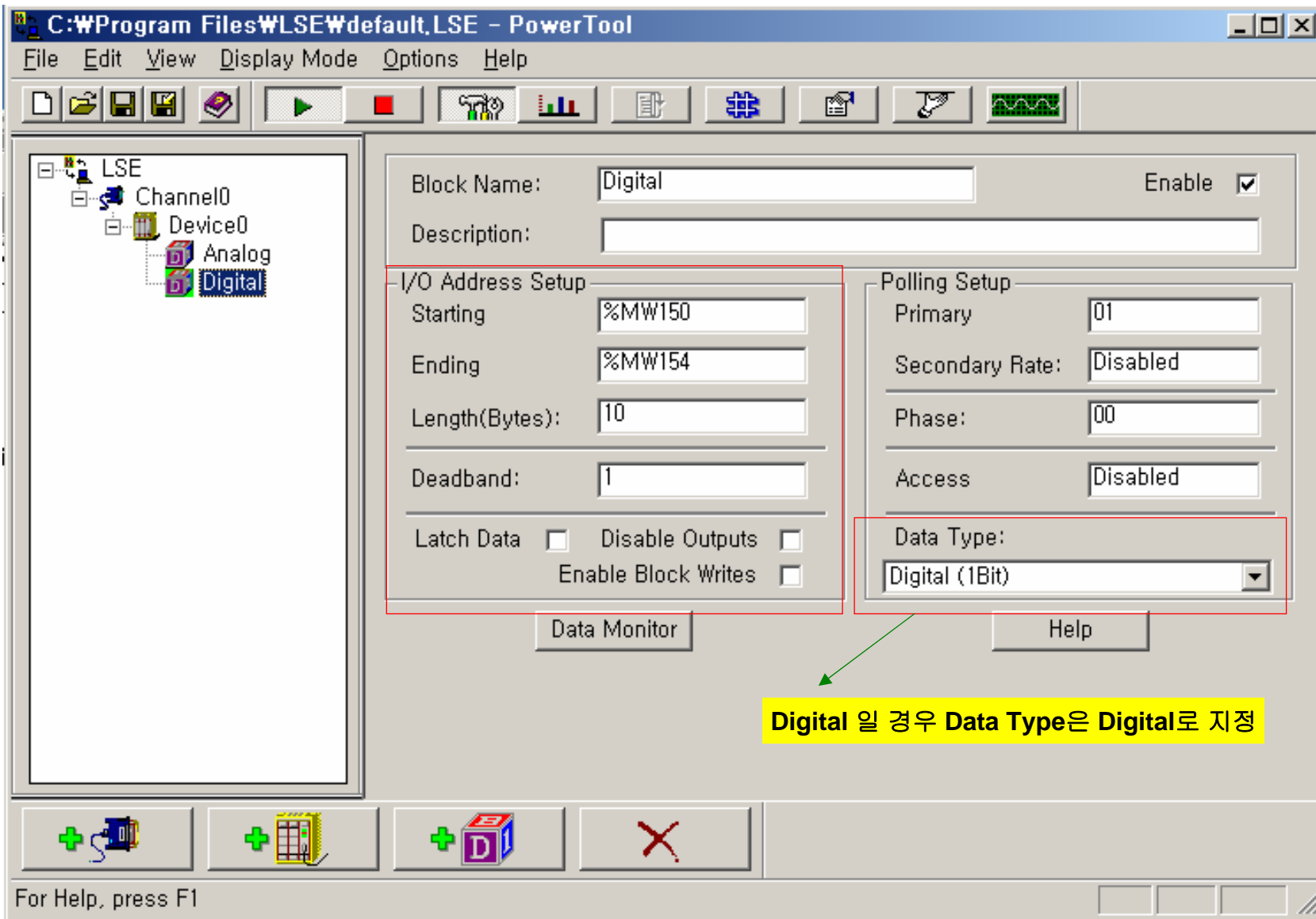
For Help, press F1

좌측부터 클릭하여 Channel, Device, Data Block을 각각 생성한다.

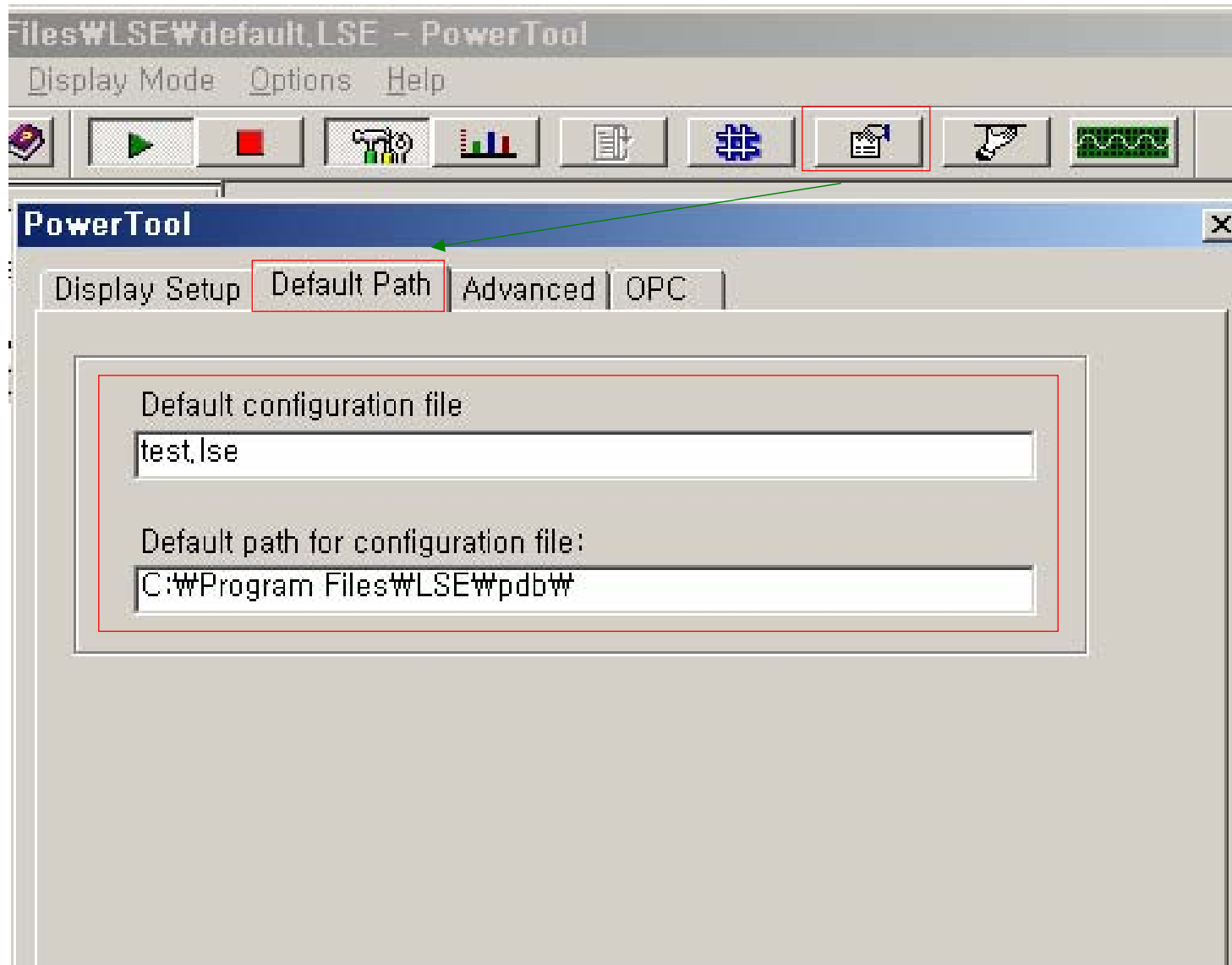
LSE Setup – Data Block : Analog Points



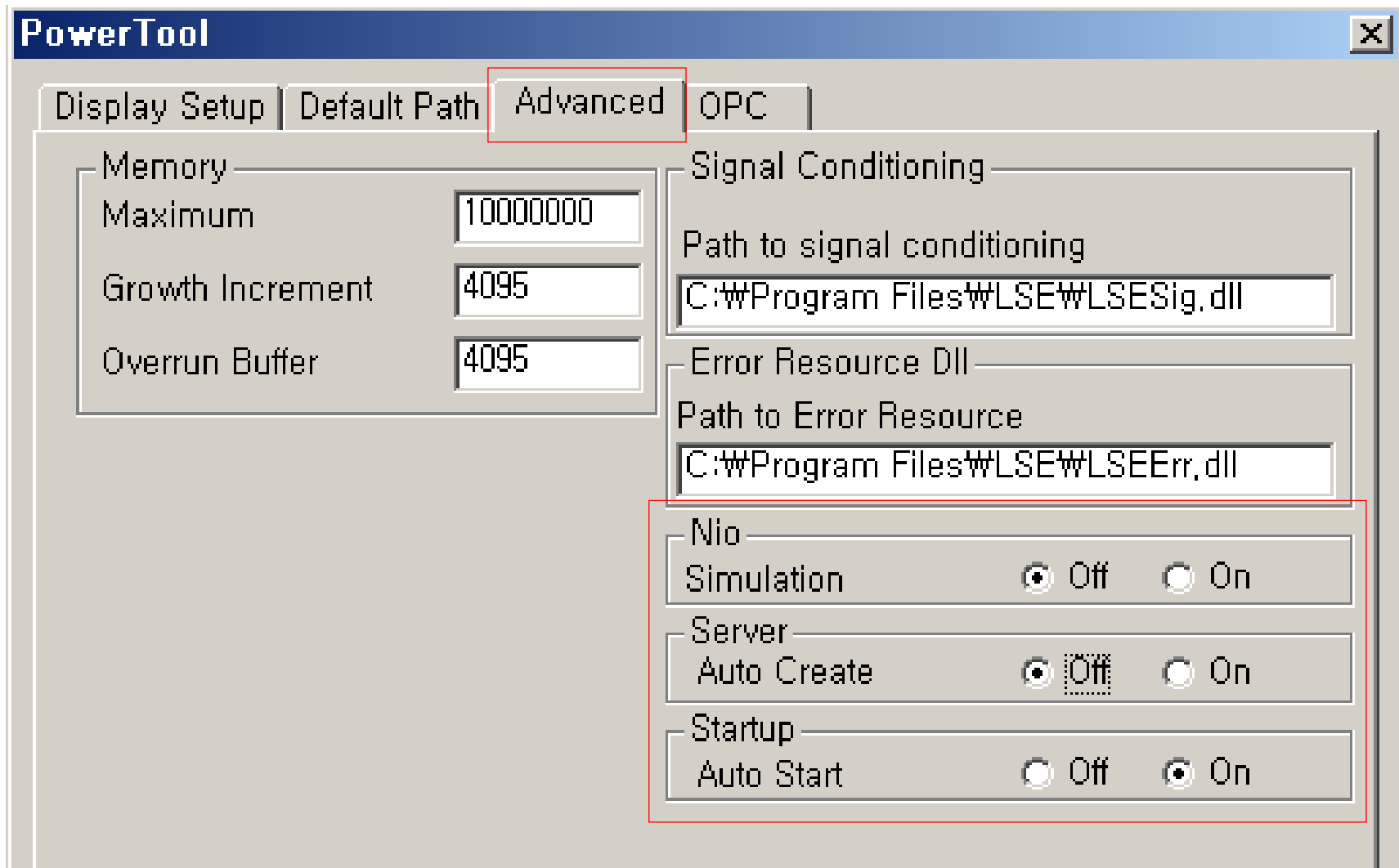
LSE Setup – Data Block : Digital Points



기타 설정

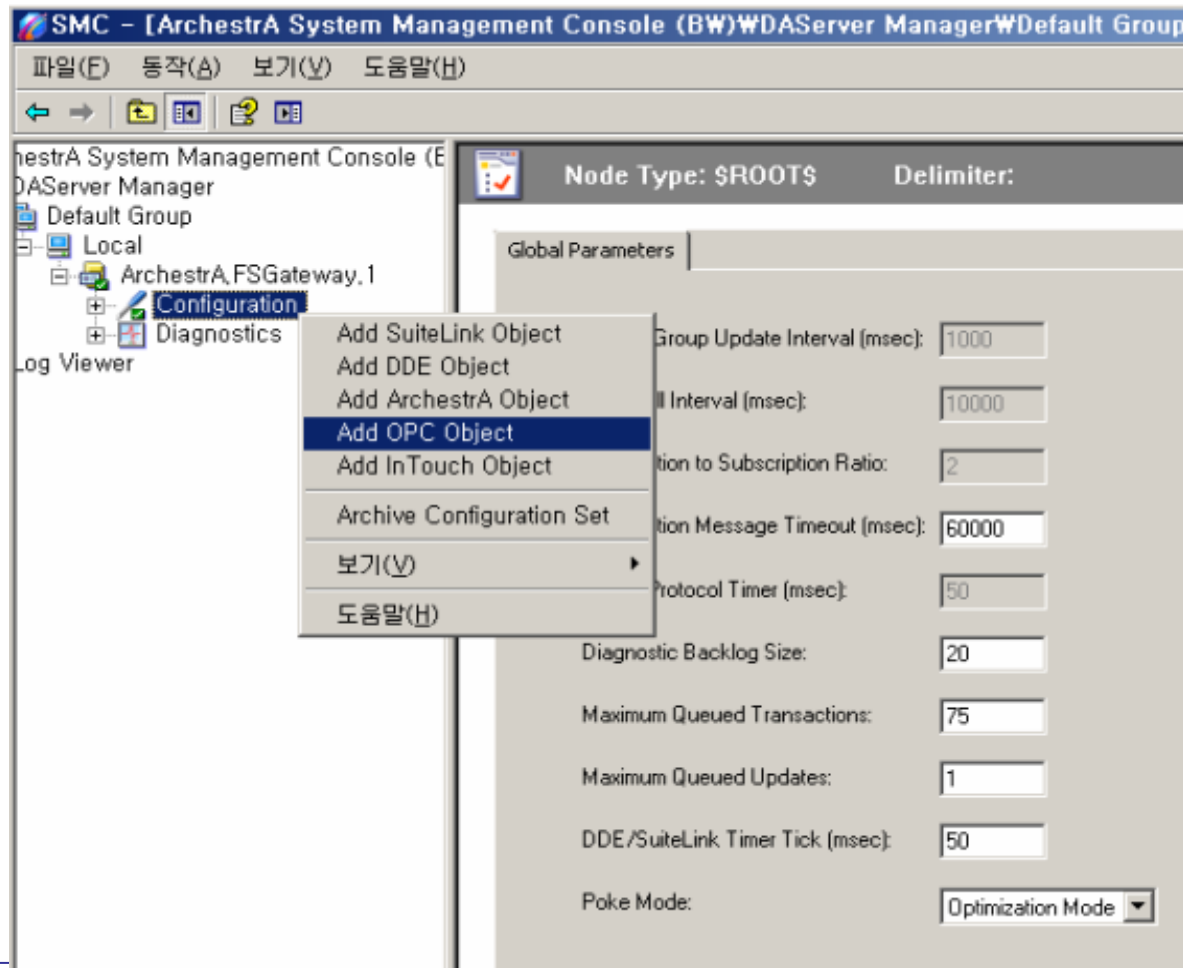


설정 완료

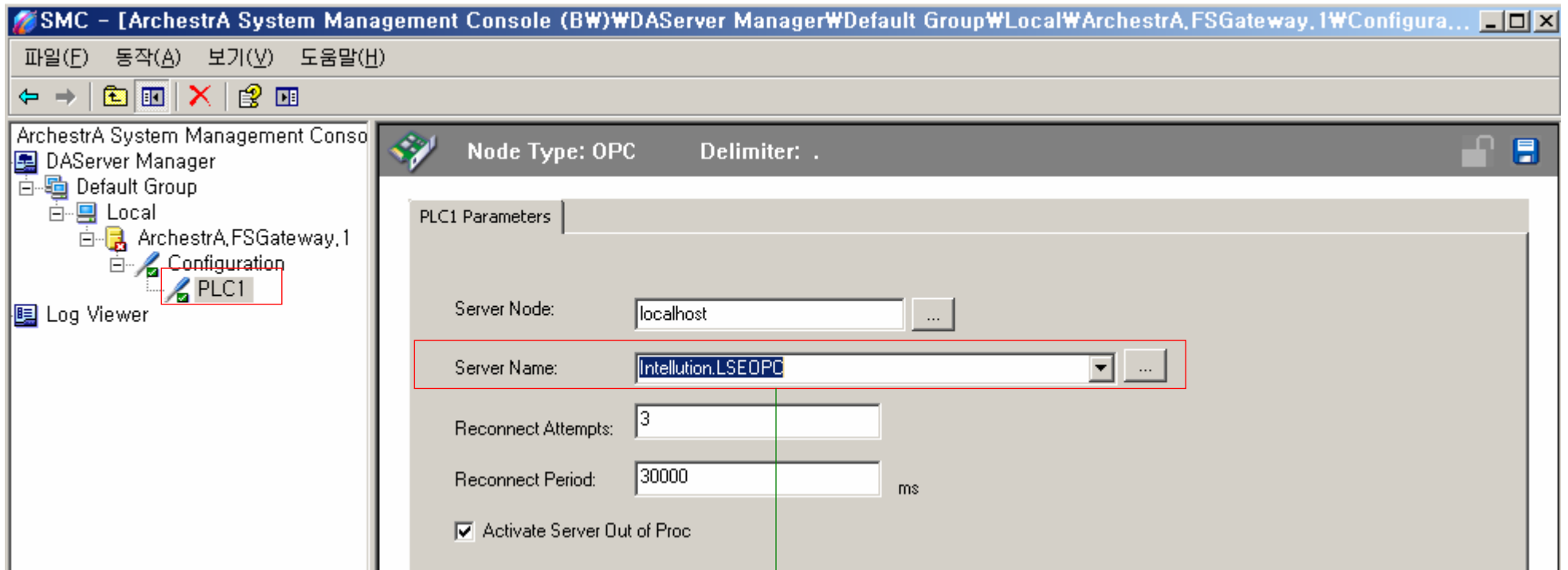


Step 2. InTouch 에서 OPC Server 설정하기

- InTouch 의 FSGateway 를 설치한다.
- 프로그램그룹에서 Wonderware > System Management Console 을 실행한다.
- 아래와 같이 Right-Click 하여 OPC Object를 추가한다.

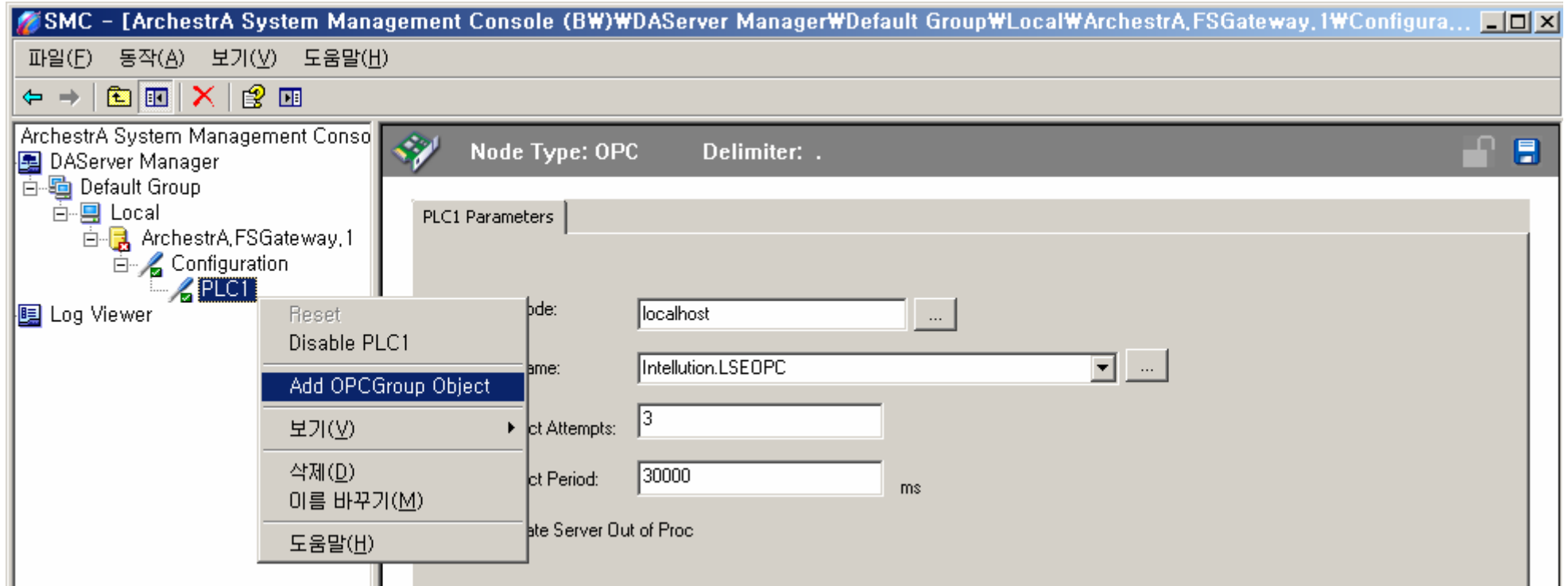


- PLC1 이라는 OPC Object를 추가한다.

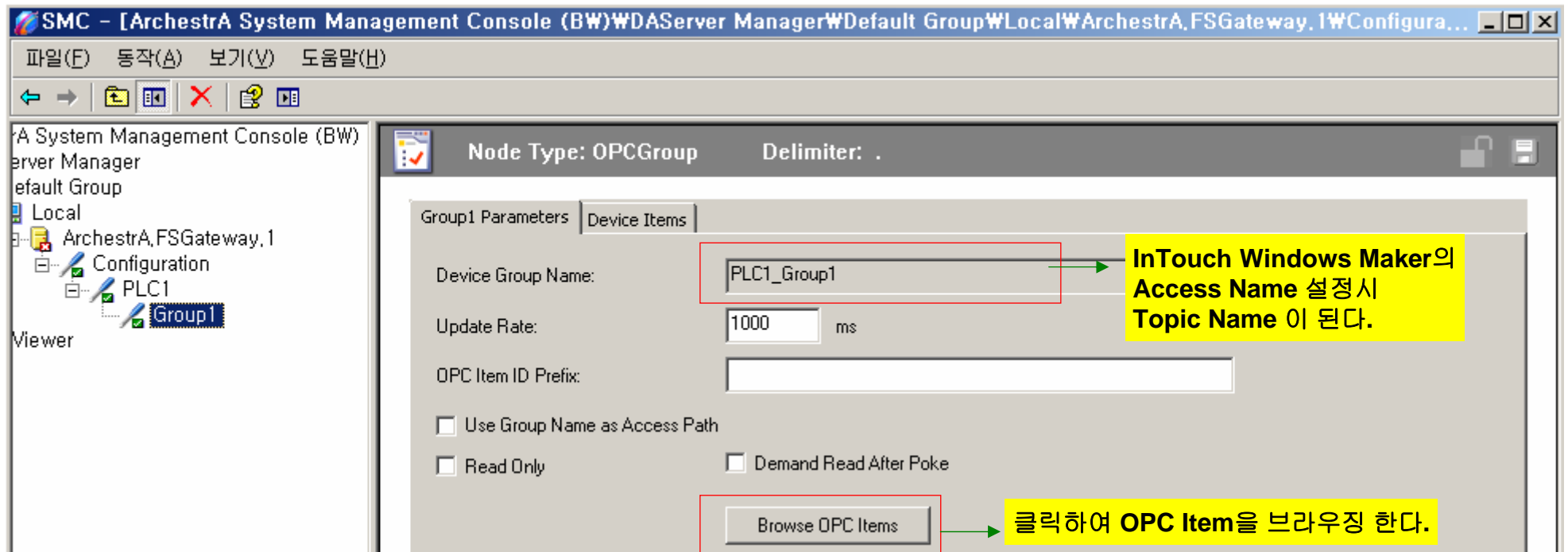


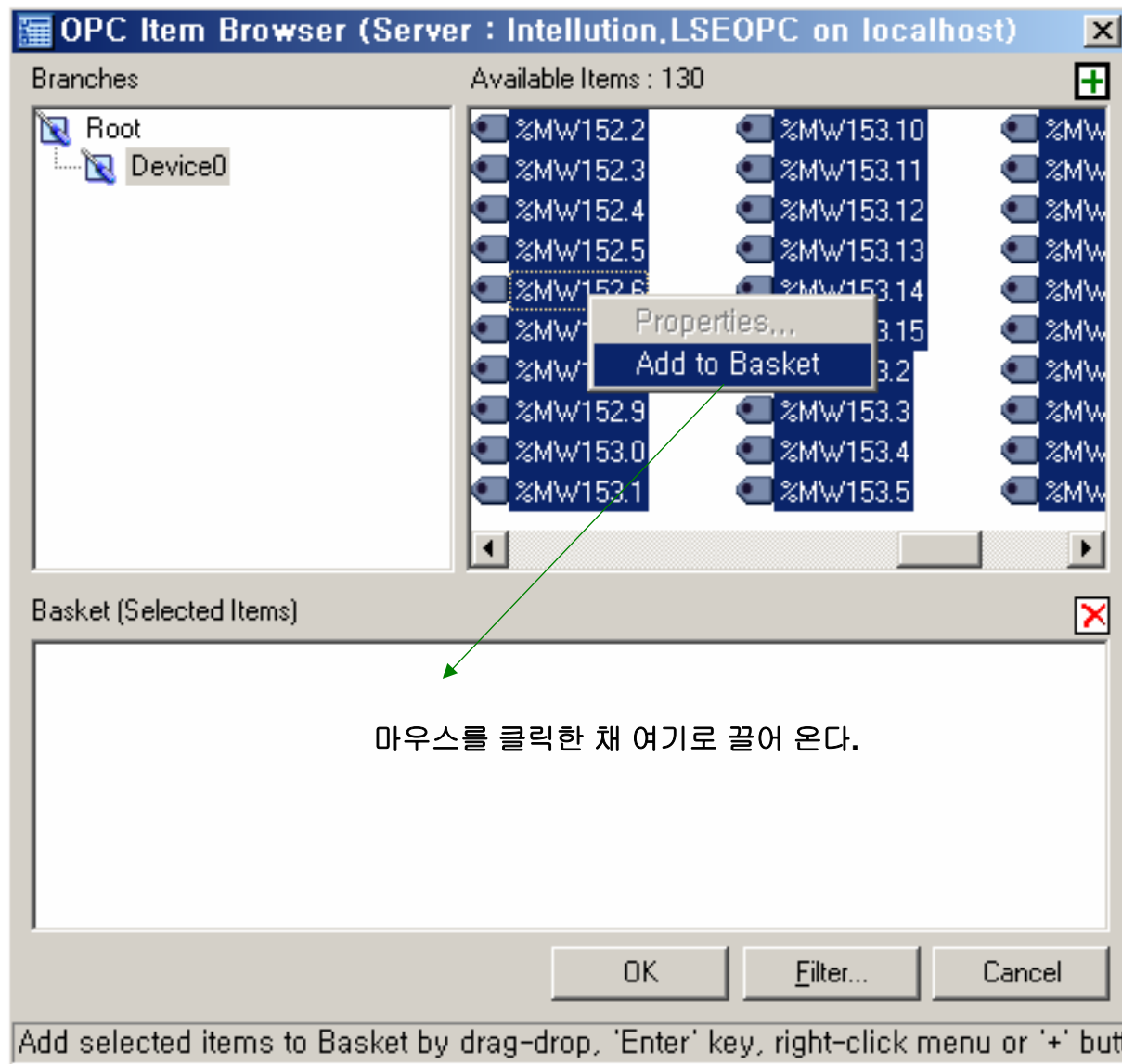
LSE OPC Server의 Program ID는 “Intellution.LSEOPC” 이다.
리스트에서 선택한다.

- 다음으로 OPC Group 을 추가한다.



- Group1 이라는 OPC Group을 추가한다.





SMC - [ArchestrA System Management Console (BW)WDAServer ManagerDefault GroupLocalArchestrA.FSGateway.1WConfigura...

파일(F) 동작(A) 보기(V) 도움말(H)

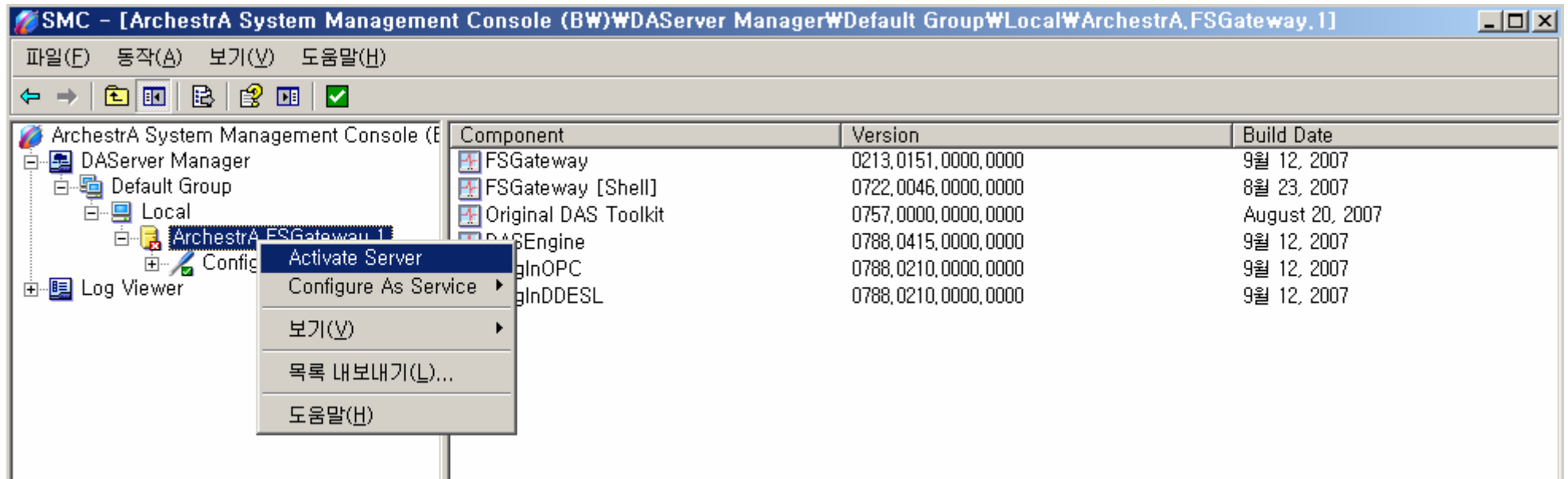
Node Type: OPCGroup Delimiter: .

Group1 Parameters Device Items

Name	Item Reference
Device0:%MW100	
Device0:%MW101	
Device0:%MW102	
Device0:%MW103	
Device0:%MW104	
Device0:%MW105	
Device0:%MW106	
Device0:%MW107	
Device0:%MW108	
Device0:%MW109	
Device0:%MW110	
Device0:%MW111	
Device0:%MW112	
Device0:%MW113	
Device0:%MW114	
Device0:%MW115	
Device0:%MW116	
Device0:%MW117	
Device0:%MW118	
Device0:%MW119	
Device0:%MW120	
Device0:%MW121	
Device0:%MW122	
Device0:%MW123	

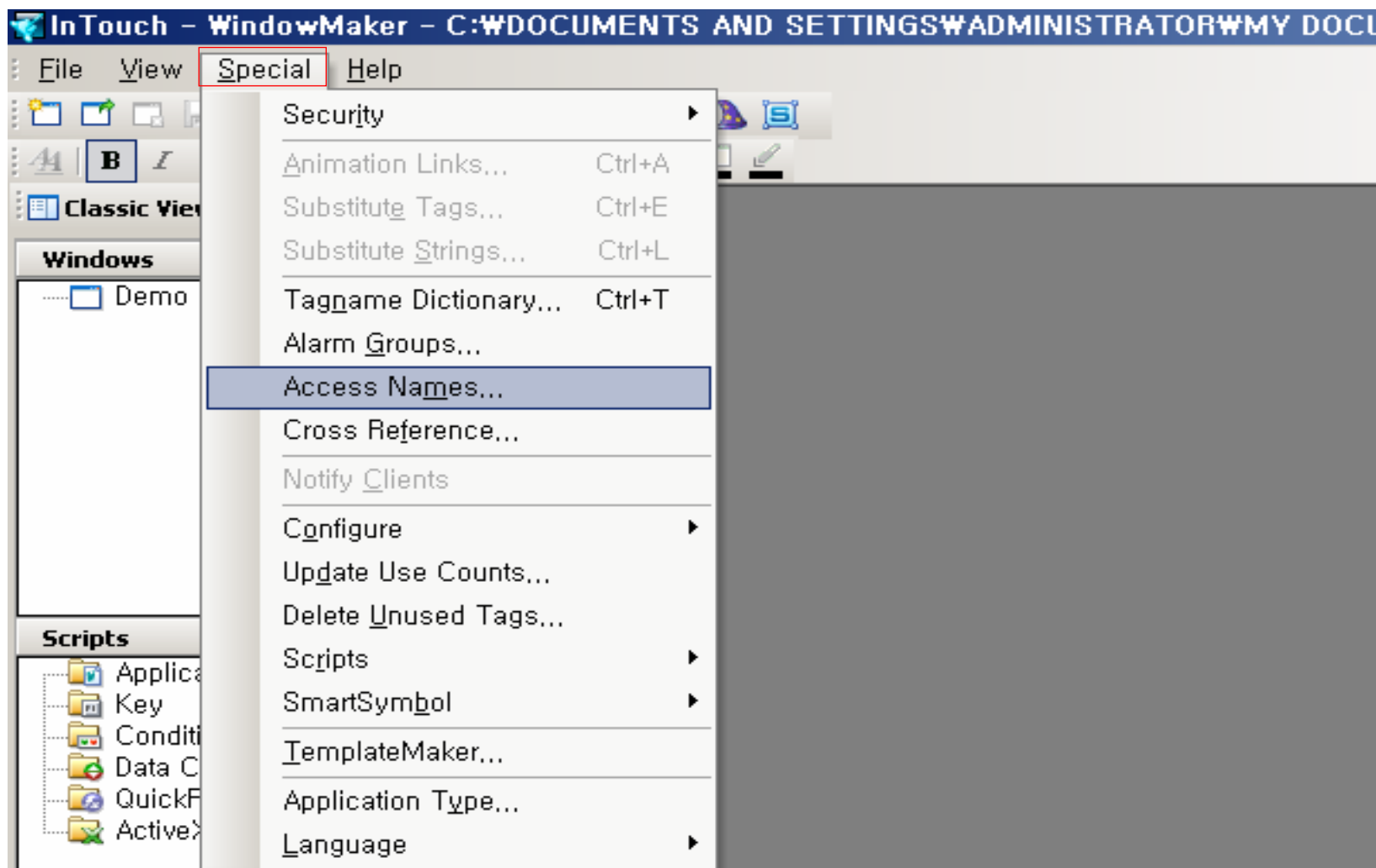
OPC Item 들이 Display 되면 등록 완료

- OPC Object와 OPCGroup Object 등록이 완료되었으면, ArchestrA FSGateway를 Right-Click 하여 Activate Server를 실행한다.
- 이제 InTouch WindowMaker에서 Access Name을 등록하여야 한다



Step 3. InTouch Windows Maker 설정

- Windows Maker에서 Access Name을 등록한다.



Add Access Name

Access

Glofa

OK

Node Name:

BW

Cancel

Application Name:

FSgateway

Failover

Topic Name:

PLC1_Group1

Topic Name : "OPC Object OPCgroup Object" 형식

Which protocol to use

DDE

SuiteLink

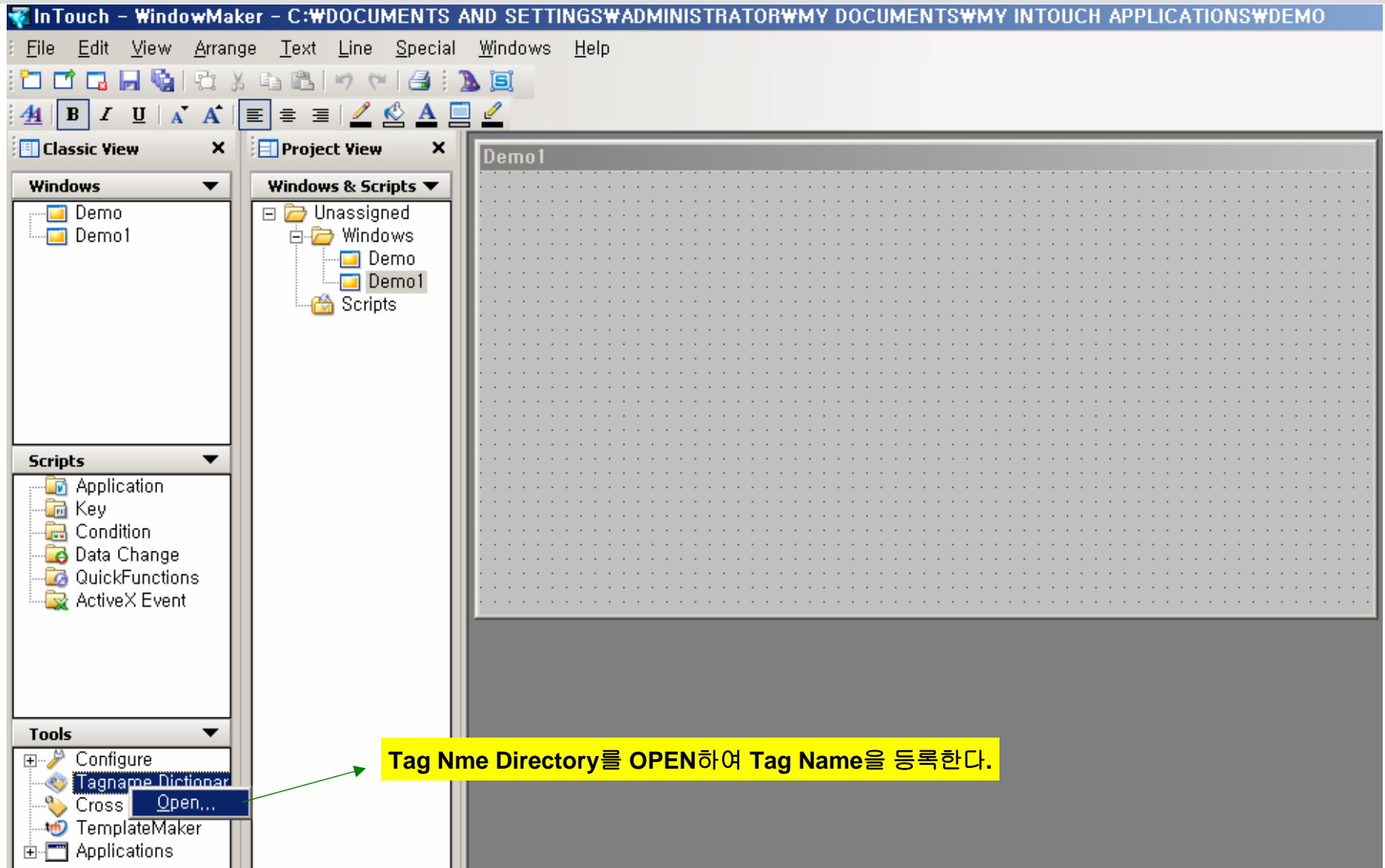
Message Exchange

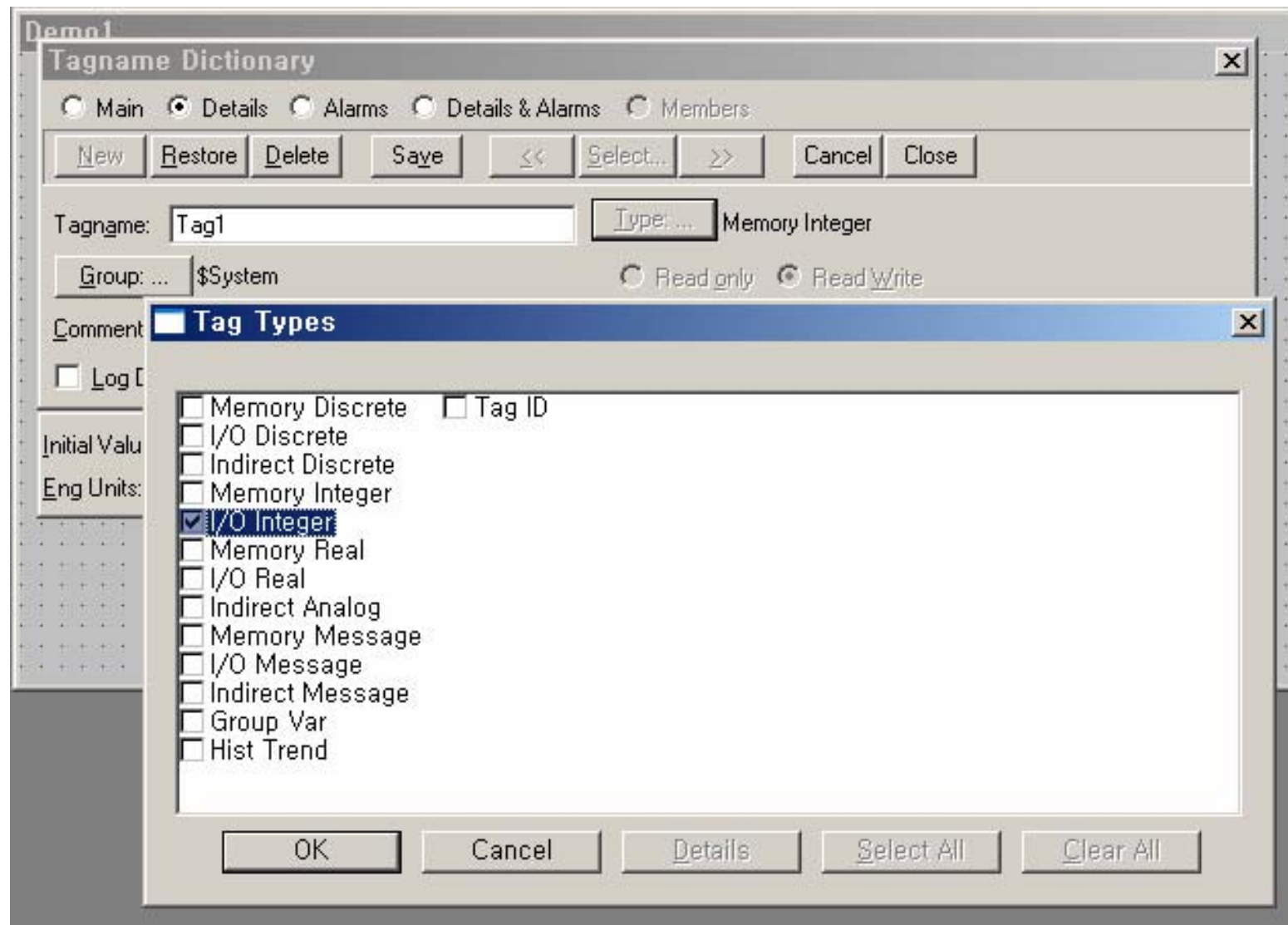
When to advise server

Advise all items

Advise only active items

Enable Secondary Source





- Access Name과 Item Name을 등록한다.

Tagname Dictionary [X]

Main
 Details
 Alarms
 Details & Alarms
 Members

Tagname:
 Type: I/O Integer

\$System
 Read only
 Read Write

Comment:

Log Data
 Log Events
 Retentive Value
 Retentive Parameters

Initial Value:
 Min EU:
 Max EU:

Deadband:
 Min Raw:
 Max Raw:

Eng Units:
 Log Deadband:
 Conversion: Linear Square Root

Glofa

Item:
 Use Tagname as Item Name

→ OPC Item 명으로 Browsing 되는 Item 명과 동일

- Windows Maker에서 링크를 만든다.

