

# KepServerEX for iFIX

*BridgeWare*

0505-303-1963

info@opchub.com

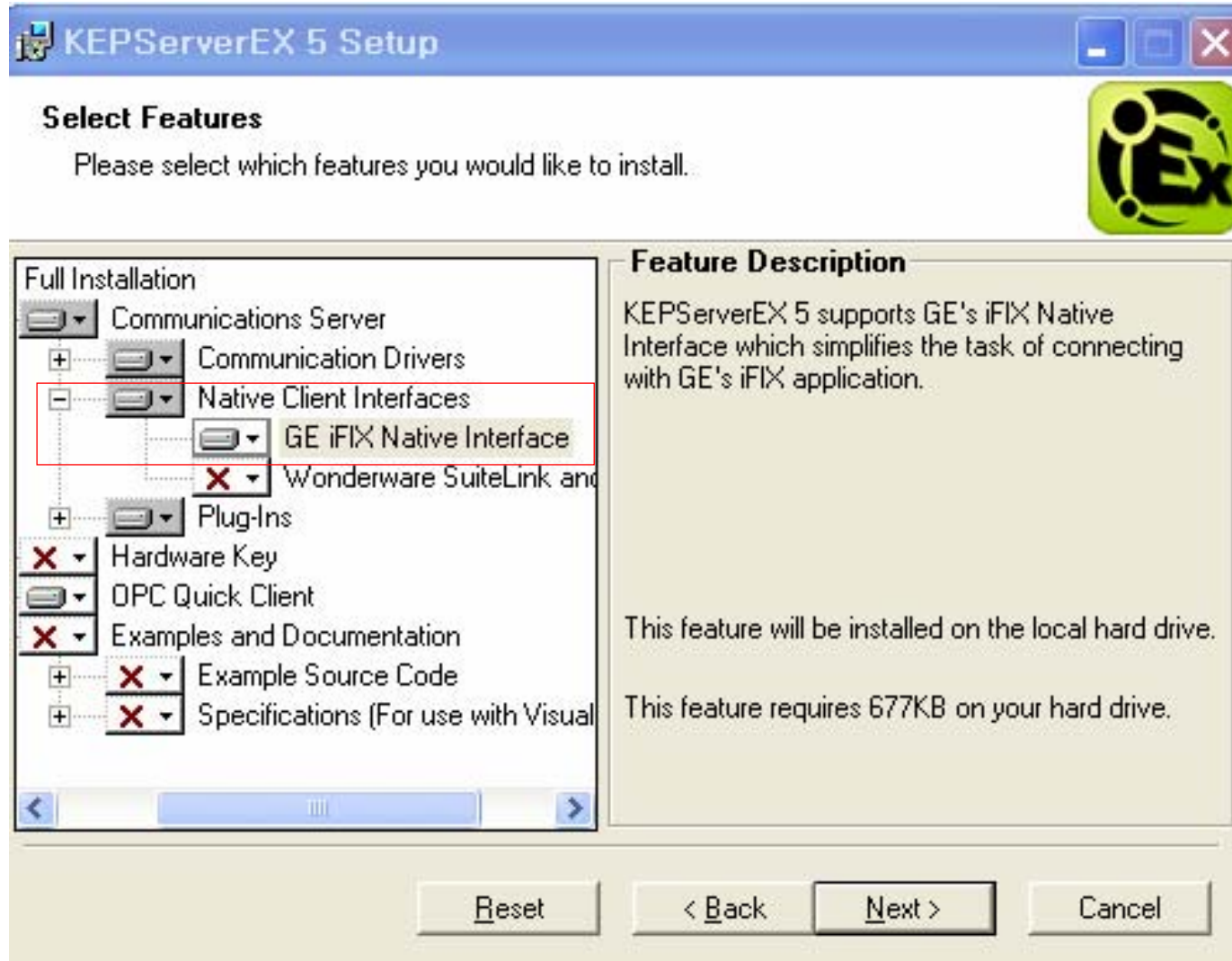
www.opchub.com



## 과정 요약

- iFIX HMI를 먼저 설치한 뒤 KepServer를 설치한다.
- KepServer 설치시 iFIX Native Client Interface를 설치한다.
- KepServer에서 통신할 Device와의 Channel/Device/Item 설정을 마친다.
  - 통신 설정은 How to Use KepServerEx.pdf를 참조한다.
- KepServer에서 iFIX HMI를 위한 설정을 한다.
- iFIX SCU에서 KepServer (Driver name = IDS) driver를 추가한다.
- iFIX DB Manager에서 Tag addressing을 한다.

# iFIX Native Client Interface 설치



# KepServer Project Properties 설정

The image shows two overlapping windows from the KEPServerEX software. The background window is the 'Project Properties' dialog, and the foreground window is the 'KEPServerEX - Runtime' menu.

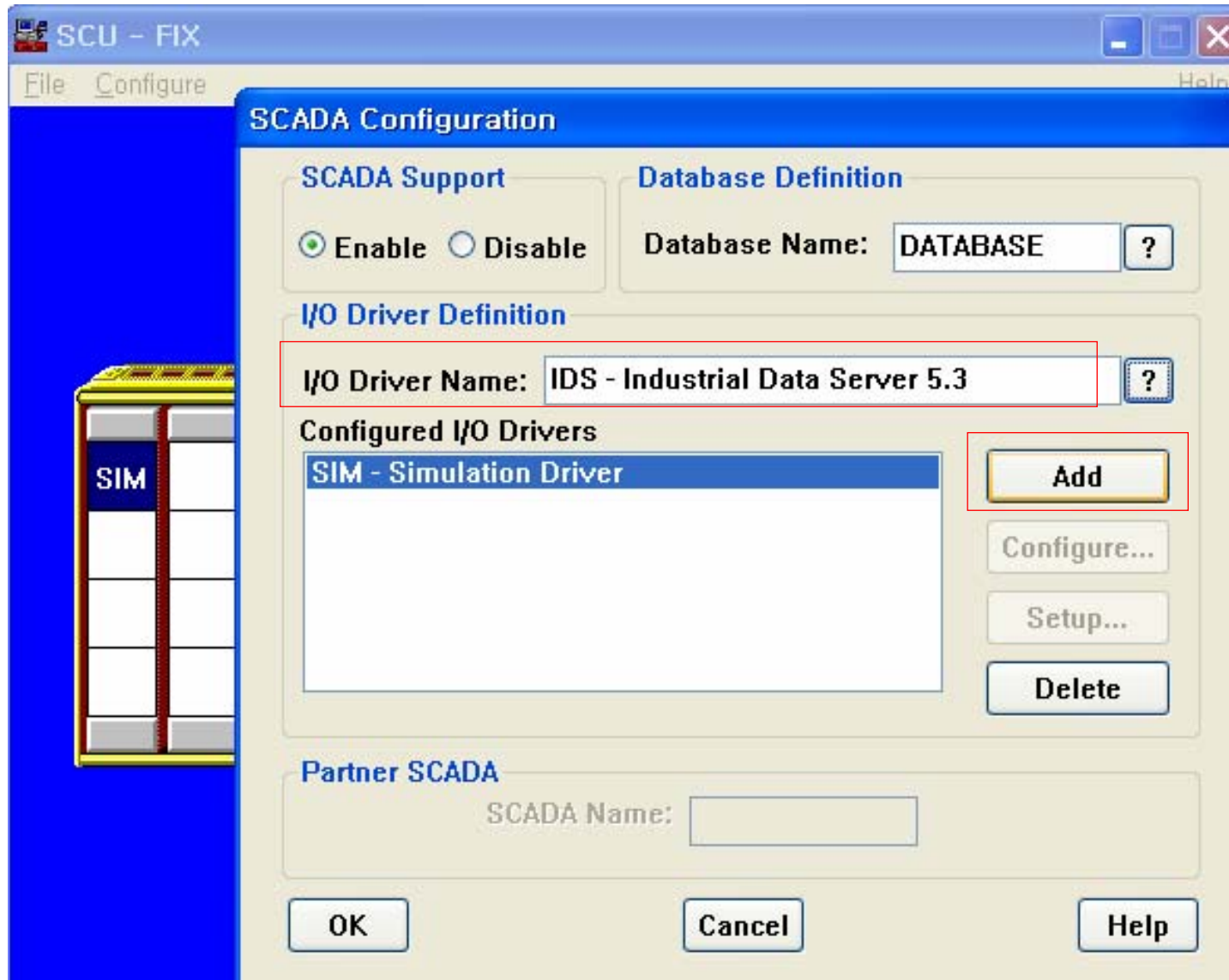
**Project Properties Dialog:**

- Tab: iFIX PDB Settings
- Section: General
  - Enable connectivity to iFIX PDB (highlighted with a red box)
  - Wait: 5 seconds before timing out on requests between PDB and KepServerEX
  - Enable latched data
- Section: iFIX PDB Read Inactivity
  - Deactivate driver tags that have not been read by iFIX PDB for a time at least 0:00:00:15 (days:hours:minutes:seconds).
- Button: Restore Defaults
- Buttons: 확인 (OK), 취소 (Cancel)

**KEPServerEX - Runtime Menu:**

- File | Edit | View | Tools | Runtime | Help
- New (Ctrl+N)
- Open...
- Save (Ctrl+S)
- Save As...
- Import CSV...
- Export CSV...
- Project Properties... (highlighted)
- 1 Melsec\_sample.opf
- 2 modbus\_test.opf
- 3 Simulation Driver Demo.opf
- 4 I:\WP\Particle\_Counter.opf
- 5 Particle\_Counter.opf
- 6 Facas1\_sample.opf
- 7 SIX\_S7\_Emulator.opf
- 8 Demo\_S7\_for\_LM.opf
- Exit

# iFIX SCU (System Configuration Utility) 설정



# KepServer 설정 예

The screenshot displays the KEPServerEX - Runtime application window. The main interface is divided into several sections:

- Left Panel:** Shows a tree view with 'Channel1' and 'Device1'.
- Table:** A table listing configured tags with their addresses, data types, scan rates, and scaling factors.
- Bottom Panel:** A log window showing system events and timestamps.
- Device Properties Dialog:** A modal window for configuring 'Device1', including communication parameters and device identification.

Tag Name	Address	Data Type	Scan R...	Scaling	Description
Tag1	D0000150	Short	100	None	
Tag2	D0000151	Short	100	None	
Tag3	D0000152	Short	100	None	
Tag4	D0000153[1][5]	Short Array	100	None	
Tag5	M0000[1][10]	Word Array	100	None	

Date	Time	Message
2010-08-26	9:24:46 오전	[Error]
2010-08-26	9:24:47 오전	[Info]
2010-08-26	9:28:55 오전	[Info]
2010-08-26	9:28:55 오전	[Info]
2010-08-26	9:28:55 오전	[Info]
2010-08-26	9:28:55 오전	[Info]
2010-08-26	9:28:55 오전	[Info]
2010-08-26	9:28:55 오전	[Info]
2010-08-26	9:28:55 오전	[Info]
2010-08-26	9:28:55 오전	[Info]
2010-08-26	9:28:55 오전	[Info]
2010-08-26	9:28:55 오전	[Info]

Component	Version
KEPServerEX\Runtime	Advanced Tags Plug-in V5.3.118.0
KEPServerEX\Runtime	Data Logger Plug-in V5.3.118.0
KEPServerEX\Runtime	Alarms & Events Plug-in V5.3.118.0

**Device Properties Dialog:**

- General Tab:** Channel Assignment (Name: Channel1, Driver: Mitsubishi Ethernet)
- Device Section:** Name: Device1, Model: Q Series, ID: 127.0.0.1:NO:255
- Enable data collection
- Simulate Device

# iFIX Tag 작성

Analog Input - [A11] \*

Basic Alarms Advanced

Tag Name : A11

Description :

Previous : Next : ...

**Addressing**

Driver : IDS Industrial Data Server 5,3

I/O Address : Channel1,Device1,Tag1

Signal Conditioning: None Hardware Options:

**Scan Settings**

Process by Exception

Scan Time : 1

Phase At :

**Engineering Units**

Low Limit : 0,00

High Limit : 100,00

Units :

Add 취소 도움말

iFIX에서 addressing은 Channel\_name.Device\_name.Tag\_name

**Addressing**

Driver : IDS Industrial Data Server 5,3

I/O Address : Channel1,Device1,D0000150

Addressing 시 Tag\_name 대신 직접 Address를 입력해도 됨